



Samsung SMT handset range offer large, clear screens that display intuitive, relevant information direct to your handset giving you visibility and control of your communications. Direct access to voice mail, call logs and system directory are just some of the features accessible at the touch of a button.



[Download brochure](#)

Features

SMT-i5243



This fully-featured executive handset is ideal for users who handle large volumes of calls. Well suited for

- Adjustable graphical colour line display
- Phone book and call logs up to 100 entries
- 4.3" colour TFT LCD
- 480 x 272 pixels

- Bluetooth connectivity (USB dongle) #
- Video call (USB Camera) #

- Presence Information Management
- Voice/Video Call recording (to PC)
- 14 Programmable Keys
- 33 Feature Keys (including 5 soft keys)
- G.722 wideband Codec (high quality sound)
- XML Browser (customised screens)
- Screen Saver
- Power over Ethernet Compatibility (802.38af)
- Headset Jack
- Synchronised phone book and Call log to OfficeServ Communicator

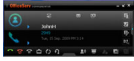
SMT-i5220



This affordable and highly featured entry level IP phone is well suited for low to moderate users. Easy to

- Adjustable graphical black & white 4 line display
- Phone book and call logs up to 100 entries
- 5 Programmable Keys
- 9 feature keys (including 3 soft keys)
- 2 Ethernet switch ports
- Power over Ethernet compatability (802.38af)
- Fixed function key (Speaker/LED, Volume, Transfer, Hold, Conference)
- Built in speakerphone
- Message waiting indicator
- Choice of ringtones
- Headset capability
- SMT-i300 does not have BLF

OfficeServ SoftPhone



- System Soft Keys
 - Speed Dialing
 - Call Pickup
 - Call Hold and transfer
 - Caller ID Display
 - Message / Voice Mail indication
 - Phone Book
 - MS Outlook Integration
 - Video features
 - Video Call
 - Softphone to Softphone
 - Softphone to Video Phone
-
- Camera On/Off, PIP (Picture in Picture)
 - Uses standard PC camera (not supplied)
 - Two available Video Viewer sizes

SMT-i5264



- IP AOM
- 64 Buttons DSS/BLF
- Integrating with SMT-i5220/5243

SMT-A52GE



- Gigabit Ethernet Adaptor
- 2 ports 10/100/1000
- BASE-T RJ45 (1 for Gb Lan, 1 for Gb PC)
- 1 ports 10/100 BASE-TX RJ-45 (for IP Phone connection)
- PoE for Gb LAN
- Separate Power Adaptor

SMT-A52GE



Closeup of Gigabit Ethernet Adaptor (SMT-A52GE)